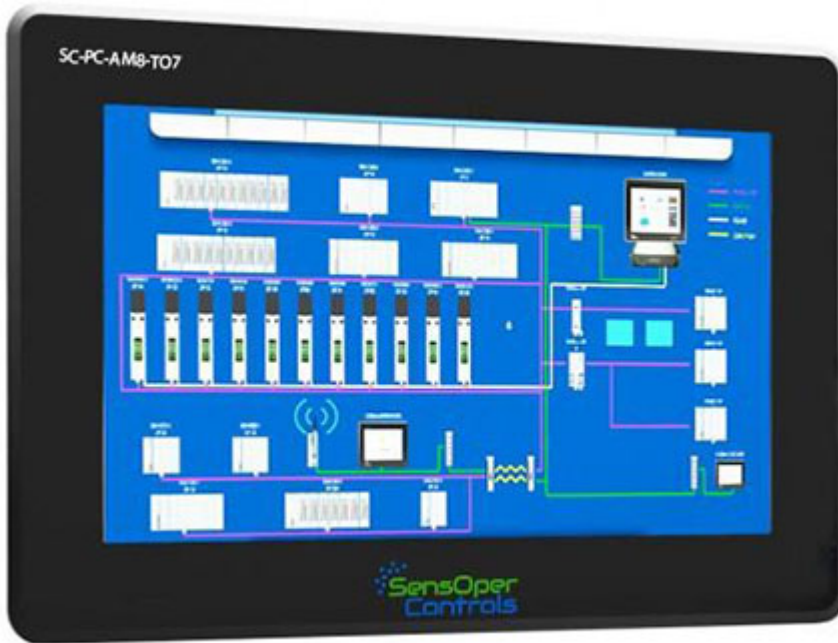


369.00 EUR  
incl. 19% VAT, plus [shipping](#)

- 0-10 V Input !



**Support:**  [Datasheet](#)

- 1.5 Ghz Quad Core CPU
- 7 inch IPS Touch Panel
- 8 x Digital Inputs
- 8 x Analog Inputs 0-10V
- 7 x Transistor outputs
- 1 x RS-485
- For IOT Applications Ready for Industrial Environments
- Powerful CPU / NODE-RED Pre-installed
- Functional Block Programming
- Industrial Level Inputs & Outputs

### Performance

- Quad-core Cortex-A72 (ARM v8) 64-bit SoC @ 1.5GHz
- OpenGL ES 3.1, Vulkan 1.0
- Options for 1GB, 2GB, 4GB or 8GB LPDDR4-3200 SDRAM
- Options for 8GB, 16GB or 32GB eMMC Flash memory
- 2.4 GHz, 5.0 GHz IEEE 802.11 b/g/n/ac wireless;
- Bluetooth 5.0, BLE

### Inputs & Outputs

- 1 x Gigabit Ethernet
- 2 x USB Type A Ports
- 1 x M.2 SSD Port – Internal
- 1 x microSD